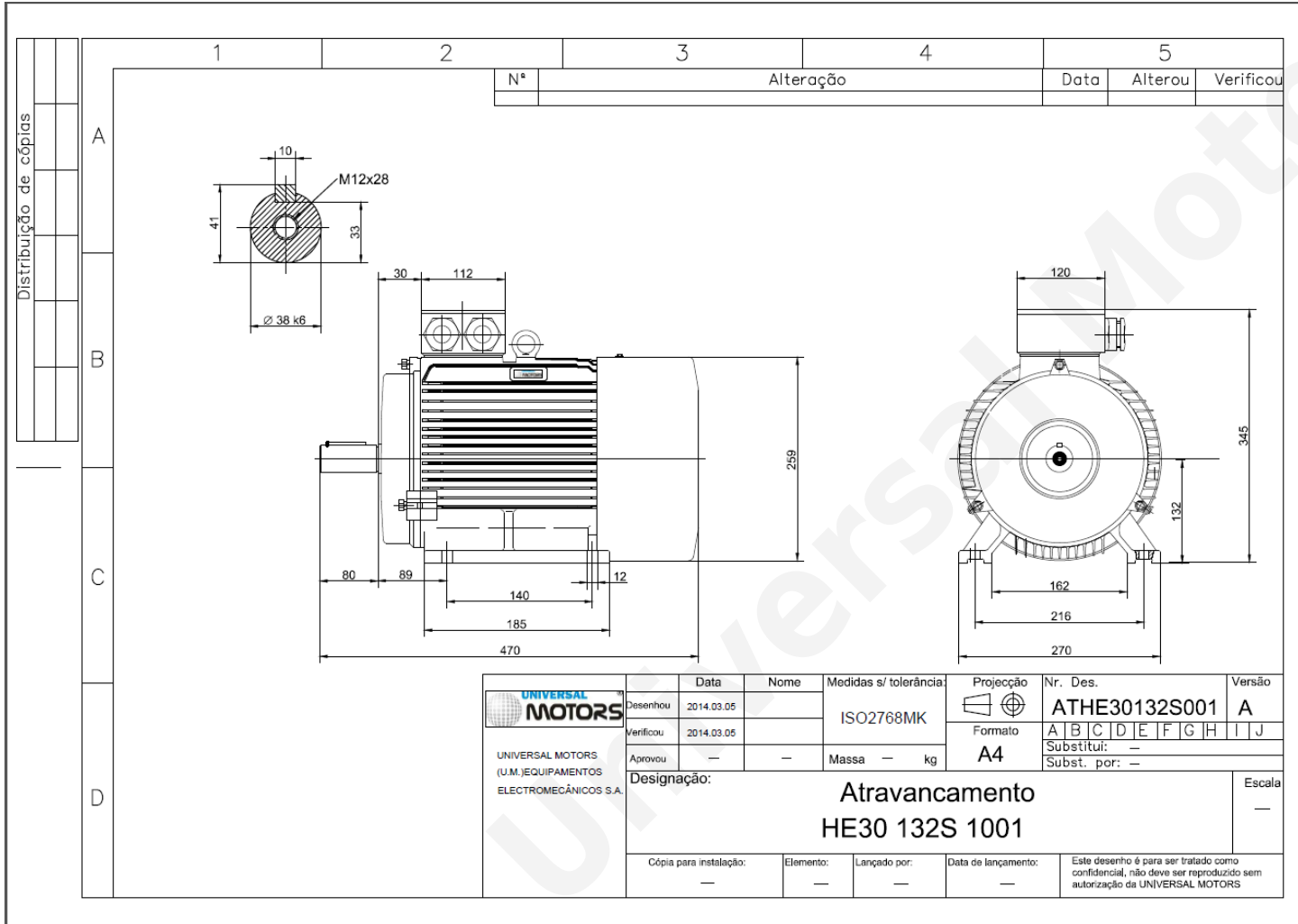


TECHNICAL DATA

Three Phase Electric Motors - Cast Iron Frame
 HE30 132 S1 2 IE2
 5.5 kW / 7.5 Cv
 2910 RPM



Motor type:	HE30 132 S1 2 IE2
Output:	5.5 kW / 7.5 Cv
Speed (min ⁻¹):	2910 RPM
Frequency:	50 Hz
Voltage:	400 V
Current:	10.4 A
Power factor (Cos Ø):	0.88
Poles:	2
Insulation class:	F
Temperature rise Class:	B
Efficiency 50%:	86.0 %
Efficiency 75%:	88.0 %
Efficiency 100%:	87.0 %
Torque:	18 N.m
Tstarting/Tnominal:	2.2
Istarting/Inominal:	8.0
Tmaximum/Tnominal:	2.3
Noise:	69 Db(A)
Weight:	71 Kg
Bearing DE:	6308 2Z C3
Bearing NDE:	6308 2Z C3

Regime - S1

Altitude - 1000m

Environment Temperature - 40°C

CONTACTS:

UNIVERSAL MOTORS	Tel: +351 252 299 080
Rua de São Brás,745	Fax: +351 252 299 089
4480-782 VILA DO CONDE	Mail: geral@universalmotors.pt

* References applied only in the UK